



## CENTER AISLE

We ask two of the country's lawmakers—from both parties—how they travel, who they admire and what guides their leadership styles.



### DEB FISCHER

SENATOR, R-Nebraska

**●** Elected to the U.S. Senate in 2012, Deb Fischer is a lifelong Nebraskan who serves on the Senate Armed Services Committee as well as the Commerce, Science & Transportation Committee. Fischer and her husband, Bruce, run a ranching business near Valentine, Nebraska, and have three sons and three grandchildren.

**AISLE OR WINDOW:** I like to see the sky, the clouds. I like to see what's beyond the horizon.

**FAVORITE VACATION SPOT:** When I was young, my family would camp in Rocky Mountain National Park near Estes Park, Colorado, every summer. I loved to

hike and mountain climb with my brothers. Now, the best vacation is near our home. Our Nebraska Sandhills boast the best golf destinations in the world. **HISTORICAL ROLE MODEL:** Margaret Thatcher. The Iron Lady's grit and boldness in con-

fronting economic problems at home and communism abroad stand as a gold standard for all elected leaders seeking the political courage to make difficult decisions.

**PERSONAL MOTTO:**

I'm often asked about my advice for young people as they begin to build their lives and careers. My response is this: If you work hard and do what you love, you will be successful and happy.

**MUST-TRY**

**NEBRASKA FOOD:** As a cattle rancher, Nebraska beef, of course! It's the best in the world. **NO. 1 POLICY PRIORITY:** Updating and improving our nation's transportation and infrastructure. Roads are so much more than lines on a map. They are a nation's vision for the future.



### JON TESTER

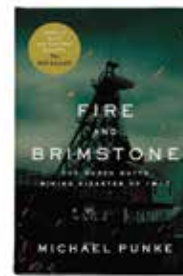
SENATOR, D-Montana

**●** Jon Tester is a third-generation Montana farmer who was elected to the U.S. Senate in 2006. Tester previously served in the Montana Senate and was a music teacher and butcher shop owner in Big Sandy, Montana. He is on the Senate Veterans' Affairs, Homeland Security, Indian Affairs, Banking and Appropriations committees.

**AISLE OR WINDOW:** I'll take any seat, because it's a long walk from Big Sandy, Montana.

**FAVORITE VACATION SPOT:** Whitefish Lake, Montana, because the views are spectacular.

**HISTORICAL ROLE MODEL:** Teddy Roosevelt, because he had the vision to



**RECOMMENDED**

**BOOK:** *Fire and Brimstone* by Michael Punke, which chronicles the brave families involved in one of the worst mining disasters in U.S. history.

**MUST-TRY MONTANA**

**FOOD:** It's hard to choose. Montana raises the best beef and grain in the country, so I'd say have a Montana steak and a cold Montana craft beer to go with it.

**PERSONAL MOTTO:**

We have two ears and one mouth. We should use them accordingly.

**NO. 1 POLICY PRIORITY:**

I want to make sure the next generation has more opportunity than my generation.

**WHAT IS MOST NEEDED TO IMPROVE WASHINGTON**

**TODAY:** Campaign finance reform. There's too much dark money and not enough transparency in our elections. ▽

SHUTTERSTOCK; MIKHAIL KOLESNIKOV (CAPITOL); U.S. SENATE PHOTOGRAPHIC STUDIO; REBECCA HAMMILL (FISCHER); HA CHETTE BOOK GROUP (FIRE AND BRIMSTONE)